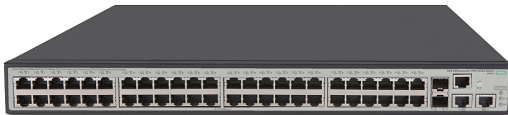


МРЕЖОВА ТЕХНИКА > СУИЧОВЕ

## HPE OfficeConnect 1950 48G 2SFP+ 2XGT PoE+ Switch



Модел : JG963A

HPE OfficeConnect 1950 48G 2SFP+ 2XGT PoE+ Switch

Суич, тип: Fixed Port

Общ брой портове: 52

Основни портове, тип: 48x10/100/1000Base-T

Power Over Ethernet (PoE): IEEE 802.3af and IEEE 802.3at;

PoE power: 370 W PoE+

Uplink портове: 2x10GE SFP, 2x10GBase-T

Свободни (10GB) слотове: No

Управление: Intuitive Web browser-based management;

Secure Web-management sessions with HTTPS/SSL;

SNMPv1, v2c, and v3; Complete session logging; Dual flash

images; Port mirroring; RMON; NTP; IEEE 802.1AB Link Layer

Discovery Protocol (LLDP); CLI; Default DHCP client

Stackable: True stacking allows for redundancy while

simplifying administration

Fans: Low-speed fan: 47.3 dB, High-speed fan: 50.0 dB

Захранване: AC voltage: 100-240 VAC; Maximum power

rating: 470 W; Available redundant power supply - Provides

additional PoE of up to 800 W. HP RPS1600 Redundant

Power System (JG136A) is sold separately. Max. power

consumption with RPS is 910 W.

Routing: Layer 3 Lite

Памет (Flash, RAM): Flash Memory: 128 MB; RAM: 1 GB

SDRAM

Капацитет за маршрутизиране/превключване, Gbps: 176

Gbps

Пропускателна способност, Mpps: 130.9 Mpps

MAC адреси: 16384 MAC address table size

VLAN (брой, стандарти): Supports IEEE 802.1Q with 4,094

simultaneous VLAN IDs

QoS: Broadcast control, Rate limiting, Traffic prioritization

(Recognizes both IEEE 802.1p and DSCP prioritization

tagging. Packets are mapped to four hardware queues for

more effective throughput), Powerful QoS feature (SP, WRR

and SP+WRR queuing)

L2 мрежови стандарти: IEEE 802.3, IEEE 802.3u, IEEE

802.3ab, IEEE 802.3ac, IEEE 802.3ad, IEEE 802.3ae, IEEE

802.3af, IEEE 802.3at, IEEE 802.3i, IEEE 802.3x, IEEE 802.3z,

IEEE 802.3az, IEEE 802.1s, IEEE 802.1w, IEEE 802.1D MAC

Bridges, IEEE 802.1D STP, IEEE 802.1p, IEEE 802.1Q

L3 мрежови стандарти: Static IPv4/IPv6 routing: provides

basic routing (supporting up to 512 static routes and 32

VLAN interface on aggregation model; 32 static routes and 8 VLAN interfaces on access models); allows manual routing configuration

IPv6 functionality: IPv6 host, IPv6 routing, MLD snooping, IPv6 ACL/QoS

Сигурност: Access Control Lists (ACLs); IEEE 802.1X and RADIUS network logins; Port isolation; ARP attack protection; Automatic VLAN assignment; STP BPDU port protection; STP root guard; Automatic denial-of-service protection;

Management password

Размери (Ш, Д, В), мм: 440 x 420 x 44

Опция за монтаж: Desktop/Rackmount

Други: 1 RJ-45 console port to access limited CLI port

**Цена : 6479.92 лв. с ДДС**

*Наличност: Този продукт е бил добавен в нашия каталог на Пт 05 юли, 2024*