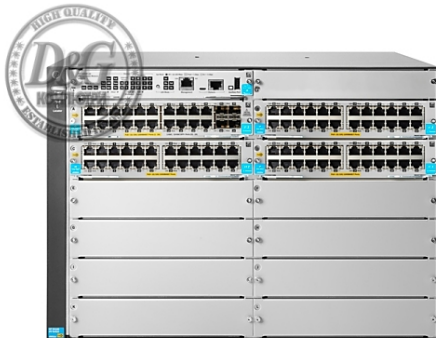


МРЕЖОВА ТЕХНИКА > СУИЧОВЕ

Aruba 5412R 92GT PoE+/4SFP+ v3 zl2 Swch



Модел : JL001A

Aruba 5412R 92GT PoE+/4SFP+ v3 zl2 Swch

Суич, тип: Modular

Общ брой портове: 96

Основни портове, тип: 92x10/100/1000Base-T

Power Over Ethernet (PoE): IEEE 802.3at Power over

Ethernet Plus: provides up to 30 W per port

Uplink портове: 4x10GE SFP

Свободни (10GB) слотове: 8 open module slot; Supports a maximum of 288 autosensing 10/100/1000 ports or 288 SFP ports or 96 SFP+ ports or 96 HP Smart Rate Multi-Gigabit or 24 40GbE ports, or a combination

Управление: IMC—Intelligent Management Center; Command-line interface; Web browser; Configuration menu; Out-of-band management (RJ-45 Ethernet); SNMP Manager; Out-of-band management (serial rs-232c or micro usb)

Stackable: Yes

Fans: 1 fan tray slot (Includes: 1 x J9832A)

Захранване: 4 power supply slots - 2 minimum power supplies required (ordered separately)

Routing: Layer 3 Advanced

Памет (Flash, RAM): Flash Memory: 16 MB, RAM: 4 GB DDR3 SODIMM

Капацитет за маршрутизиране/превключване, Gbps: 1920 Gbps

Пропускателна способност, Mpps: 1142.8 Mpps

MAC адреси: 64000 MAC address table size

VLAN (брой, стандарти): VLAN support and tagging: supports the IEEE 802.1Q standard and 2,048 VLANs simultaneously; IEEE 802.1v protocol VLANs: isolate select non-IPv4 protocols automatically into their own VLANs

QoS: Advanced classifier-based QoS, Traffic prioritization, Bandwidth shaping, Class of service (CoS): sets the IEEE 802.1p priority tag based on IP address, IP Type of Service (ToS), Layer 3 protocol, TCP/UDP port number, source port, and DiffServ

L2 мрежови стандарти: IEEE 802.3, IEEE 802.3u, IEEE 802.3ab, IEEE 802.3af, IEEE 802.3at, IEEE 802.1ad, IEEE 802.1AX, IEEE 802.1D, IEEE 802.1p, IEEE 802.1Q, IEEE 802.1s, IEEE 802.1v, IEEE 802.1w, IEEE 802.3ad, IEEE 802.3x, IEEE 802.1ab, IEEE 802.1X, IEEE 802.1AE, IEEE 802.3az

L3 мрежови стандарти: Static IP routing: provides

manually configured routing for both IPv4 and IPv6 networks, Routing Information Protocol (RIP): provides RIPv1 and RIPv2 routing, OSPF: provides OSPFv2 for IPv4 routing and OSPFv3 for IPv6 routing

IPv6 functionality: IPv6 host: Enables switches to be managed in an IPv6 network; Dual stack (IPv4 and IPv6); IPv6 ACL/QoS: supports ACL and QoS for IPv6 network traffic; IPv6 routing: supports static and OSPFv3 routing protocols

Сигурност: Switch CPU protection: provides automatic protection against malicious network traffic trying to shut down the switch; Virus throttling: detects traffic patterns typical of WORM-type viruses

Размери (Ш, Д, В), мм: 445 x 451 x 307

Опция за монтаж: Rackmount, 7U Rack

Цена : 39416.14 лв. с ДДС

Наличност: Този продукт е бил добавен в нашия каталог на Пт 05 юли, 2024